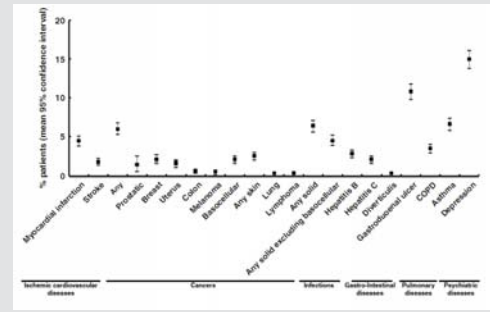
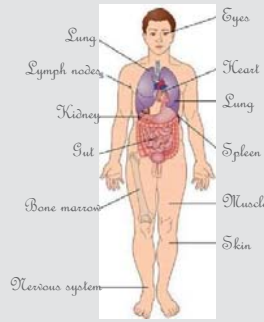
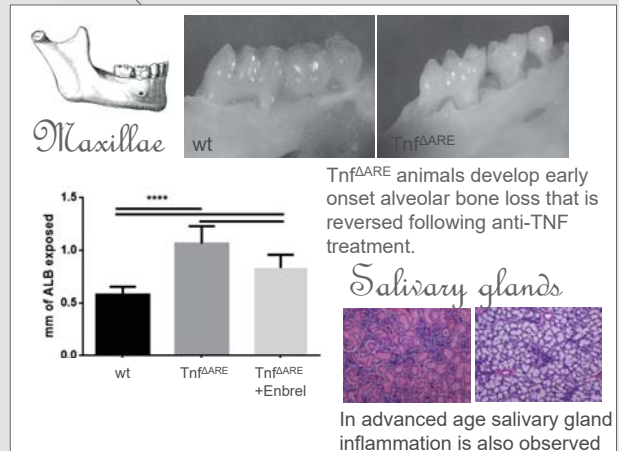
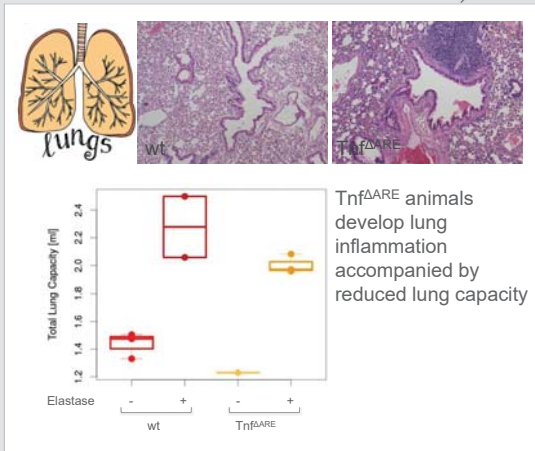
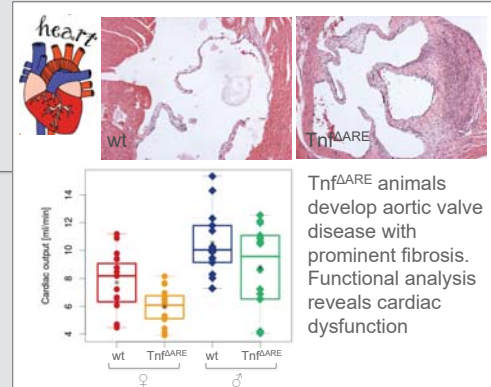
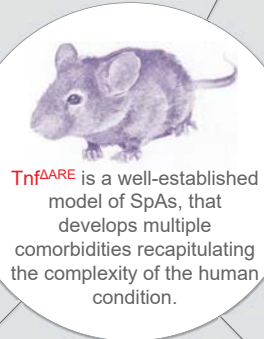
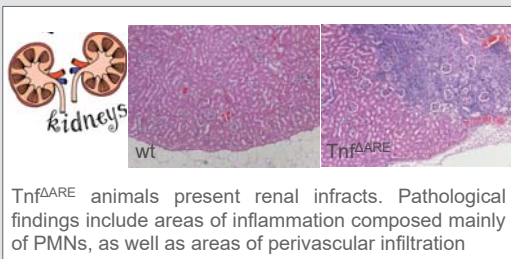
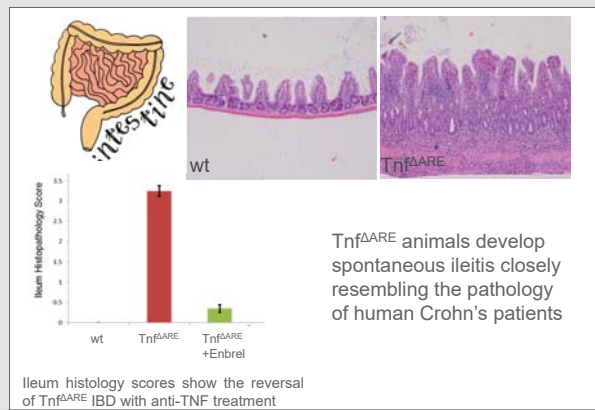
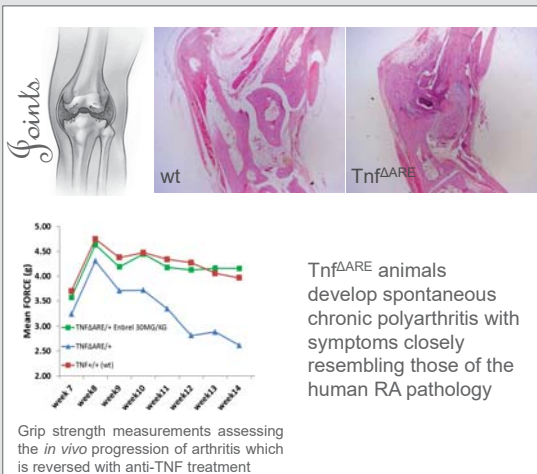


**Spondyloarthropathies (SpAs)** are a group of joint-related diseases with burden extending to multiple organs. Co-existing conditions have a major impact on the course and outcome of the disease, complicating its diagnosis and management.

Patients with spondyloarthropathies have two or more comorbidities including inflammatory bowel disease, psoriasis, cardiovascular disease, uveitis, and osteoporosis.



Dougados M, et al. Ann Rheum Dis 2013



Additional Tnf<sup>ΔARE</sup> comorbidities include deviations in:

- Behavior
- Neurology
- Eye morphology and function
- Nociception
- Clinical chemistry and allergic responses